

سوناطراک



sonatrach



## **SONATRACH** AN INTEGRATED OIL & GAS COMPANY

Energy for a **Sustainable Development**

---













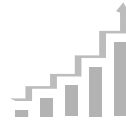
- Created just after independence on 31<sup>st</sup> December 1963, SONATRACH is an Oil & Gas company integrated across the entire value chain.
- Guarantor of Algeria's energy security.
- Ranked 1<sup>st</sup> African company and first exporter in the country.
- Ensures a production of 193.7 million TOE per year (2024).
- The Group employs nearly 200 000 workers.

## Missions and Strategic Objectives



### Missions

- Meeting the nation's hydrocarbon needs
- Maximizing the country's incomes on the short, mid and long terms
- Contribute in the economic development of the country.



### Ambitions

- Strengthening its position as the powerhouse of the national economy
- Maintaining its market shares and its international competitiveness
- Successfully change into an integrated energy company





## Strategy

### **Growth oriented towards sustained value creation in :**

- The upstream oil & Gas, by mobilizing new reserves and accelerating their development.
- Hydrocarbon processing allows to reinforce the integration of the company's activities upstream and downstream.
- Marketing hydrocarbons while strengthening its position on the global markets, notably gas markets.
- Energy transition aimed at respecting the environment, reducing the carbon footprint of hydrocarbon activities and introducing low carbon solutions.

# SONATRACH

- 1<sup>st</sup> company of the African Continent.
- 1<sup>st</sup> gas supplier in the Mediterranean region.
- 13<sup>th</sup> world oil company.
- 3<sup>rd</sup> natural gas supplier to Europe.
- 10<sup>th</sup> world natural gas producer.





## Exploration-Production Activity



**A production, and reserves potential to be mobilized and resources to be developed.**

E&P Activity which occupies a central place in SONATRACH's core businesses, covers operations of prospecting, research, exploration, development and exploitation of oil and gas deposits.

This activity is carried out by SONATRACH alone or in partnership in accordance with the Law governing hydrocarbon activities and other legal provisions.

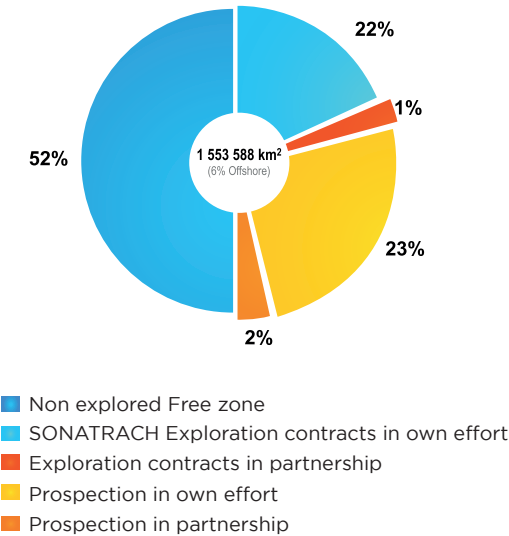
The development and exploitation of deposits is part of a long term vision focused on the country's energy security and the contribution to the well-being of the citizens.



## Mining sector

**45%** of the mining  
sector in Own Effort

**3%** of the mining  
sector in partnership



With its geographical location and its hydrocarbon rich sub-soil, Algeria is endowed with a vast mining domain of more than 1.5 million km<sup>2</sup>, still largely unexplored , offering a significant potential of resources both in the conventional, unconventional.

Three major objectives are assigned to the Exploration-Production Activity :

- The constant renewal and expansion of the reserve portfolio.
- The development and exploitation of deposits for an optimal valorization of resources.
- Research and development of new projects at national and international levels.







## Pipeline Transport Activity



**An instrument of transport and regulation of liquid and gaseous hydrocarbon flows**

The Transport Activity by pipeline plays a significant role in regulating the flow of liquid and gaseous hydrocarbon notably for international natural gas market.

This role gives SONATRACH the quality of a trusted and reliable supplier among its national and foreign customers.

Since SONATRACH builds its first oil pipeline (OZ-1 Haoud El Hamra-Arzew) in 1966, the Pipeline Transport Activity has gradually experienced throughout the development of its upstream oil, a tremendous growth.



The Pipeline Transport Activity ( TRC) is responsible in operating liquid and gaseous hydrocarbons transport system, maintaining and developing the transport network in compliance with safety, cost and quality standards.

SONATRACH operates a pipeline transport network with a total length of 21 190 km.

- 43 pipelines distributed in 22 Systems of Pipeline Transport.
- 85 pumping and compressor stations installed across the network.





- 128 liquid hydrocarbon storage tanks with a usable capacity of 3.25 Millions TOE.
- Three (03) oil ports in Arzew, Skikda and Béjaïa, with a loading capacity of 1.3 Million tons. The petroleum ports are equipped with 5 offshore loading buoys.
- Two (02) operational international gas pipelines connecting Algeria and Europe with a transport capacity of 43 billion cubic meters per year.

These structures are :

- The Enrico Mattei gas pipeline (GEM) linking Algeria to Italy via Tunisia.
- MEDGAZ gas pipeline connecting directly Algeria to Spain from Beni Saf.



## **2 hubs**

- Hassi R'Mel : National Gas Dispatching Center ( CNDG) having a capacity of 390 Million Sm<sup>3</sup>/day.
- Hassi Messaoud : Liquid Hydrocarbon Dispatching Center (CDHL) with a capacity of 1.4 Million barrels/day.

## **1 Pipelines digital supervision center.**



## Liquefaction & Separation Activity



The Liquefaction & Separation Activity deals with liquefaction of natural gas and separation of LPG into propane and butane. The activity is ensured through four LNG and two LPG complexes.

This Activity is also responsible for managing two major industrial areas in Arzew and Skikda which receive significant oil and gas assets.

An LNG pioneer by the commissioning of the first LNG export terminal in the world in 1964 in Arzew, SONATRACH has risen over the years among the very first world leaders in the production and marketing of liquefied LNG.

Currently, SONATRACH's LNG complexes supply its customers on its traditional market, namely, Europe and also more distant markets such as the Asian and American continents.



## COMPLEXES EN EXPLOITATION

### GL1K : Skikda

- Start UP : 1972/ Revamping 2013
- Liquefaction capacity : 10 million M<sup>3</sup> LNG/Year
- Number of trains: 1 Mega train
- Storage capacity : 3 Tanks ( 246 000 m<sup>3</sup>)

### GL1Z : Béthioua

- Start UP : 1978
- Liquefaction capacity : 17,56 Million M<sup>3</sup> GNL/an
- Number of trains : 06
- Storage capacity : 03 tanks ( 300 000 m<sup>3</sup>)

### GL2Z : Béthioua

- Start UP : 1981
- Separation capacity :17,8 million m<sup>3</sup> LNG per year
- Number of trains : 06
- Storage capacity : 03 tanks ( 300 000 m<sup>3</sup>)

### GL3Z : Béthioua

- Start UP : 2014
- Separation capacity :10,6 million m<sup>3</sup> LNG per year
- Number of train : 1 Mega train
- Storage capacity : 03 tanks ( 300 000 m<sup>3</sup>)

### GP1Z : Arzew

- Start Up : 1983/1998/2010
- Liquefaction capacity : 9 million tons/ year
- Number of train : 9
- Propane storage capacity : 4 tanks ( 280 000 m<sup>3</sup>)
- Butane storage capacity : 4 tanks (280 000 m<sup>3</sup>)

### GP2Z : Arzew

- Start Up : 1973
- Liquefaction capacity : 1.4 million tons/ year
- Number of train : 2



## Refining Activity & Petrochemicals



This activity, refines and processes hydrocarbons to supply high quality petroleum and petrochemical products to national and international markets.

SONATRACH owns five crude oil refineries with a processing capacity of 27 Million tons/year in addition to a condensate processing unit of 5 million tons per year.

Since 2020, SONATRACH has recorded excellent results from its refineries, allowing it to fully cover its national market need and no longer rely on imports.

### **RA1G : Alger**

- Start up : 1964/ Revamping 2019
- Processing capacity : 3.645 million tons / year

### **RA1Z : Arzew**

- Start Up : 1973/ Revamping 2013
- Processing capacity : 3.75 million tons/ year

### **RHMD2 : Hassi Messaoud**

- Start Up : 1972
- Processing capacity : 1.1 million tons/year

### **RA1K : Skikda**

- Start Up : 1980/ Revamping 2013
- Processing capacity : 16.5 million tons /year

### **RA1D : Adrar**

- Start Up : 2007
- Processing capacity : 0.6 million tons /year

### **RA2K : Skikda**

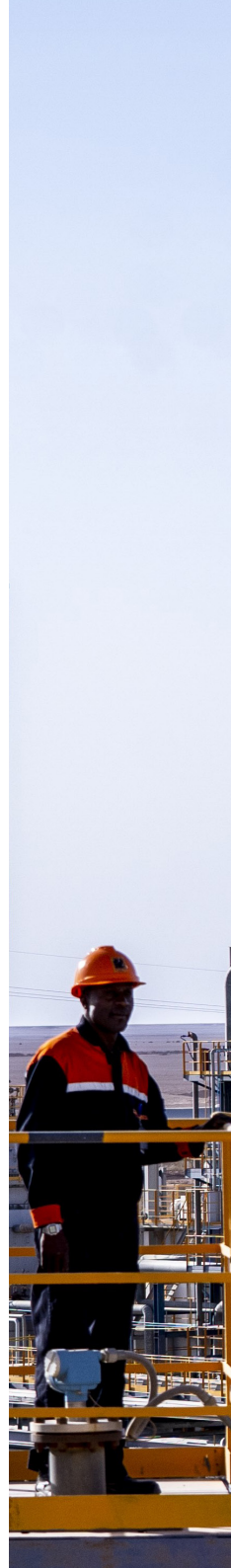
- Start Up : 2009
- Processing capacity : 5 million tons/year

### **CP1Z : Arzew**

- Start Up : 1976
- Production capacity : 152 000 tons/year
- Products : Methanol, resin, formalin, formurate

### **CP2K : Skikda**

- Start Up : 2005
- Capacity production : 130 000 tons/year
- Product : PEHD.





**Six crude and condensate refineries**

with a total capacity of  
of 30.5 million tons/year.



**A methanol complex**

Having a capacity of  
120 000 tons/ » year

**PEHD complex**

With a capacity of  
130 000 tons per year

**In partnership:**

**Two Helium units** with a total capacity  
of 1 200 million scf/year.

**Two Ammonia/ Urea complexes** having  
a total capacity of 2.8 million tons per  
year of ammonia and 3.4 million tons/  
year of urea.



## MARKETING ACTIVITY



SONATRACH is in charge of supplying the national market with oil and gas products and also marketing and valorizing hydrocarbons internationally under the best conditions of economic valorization.

As part of its strategy of development, SONATRACH has two main objectives :

Ensuring supplies to the national market, on the one hand , better valorizing its exports and consolidating its market shares in order to maintain its competitive position on the international market, on the other hand.

On the international level, SONATRACH has real assets which allow it to face competition : its presence on all the segments of the gas industry, its reputation as a reliable energy supplier,

the geographical proximity with Europe, the flexibility of its installations, its capacity of negotiation and adaptation to the evolvments of the market.

## LNG FLEET

### 06 LNG Tankers

Tanker	Owner or Shipowner	Date of Construction	Capacity ( m <sup>3</sup> )	Shareholding
Tessala	Hyproc SC	2016	171 800	Hyproc 100%
Ougarta	Hyproc SC	2017	171 800	Hyproc 100%
Lalla Fatma N'Soumer	ANGTC (Algerian Nipon Gas Transport Corporation)	2004	145 000	JV (SH 25% , Hyproc 25% , Itochu 25 % , Mitsui 25%)
Cheikh El Mokrani	MLTC (Mediterranean Liquified Natural Gas Transport Corporation)	2007	75 000	JV (SH 25% , Hyproc 25% , Itochu 25 % , Mitsui 25%)
Cheikh Bouamama	SLTC (Skikda Liquified Natural Gas Transport Corporation)	2008	75 000	JV (SH 25% , Hyproc 25% , Itochu 25 % , Mitsui 25%)
Berge Arzew	SBAC (Sonatrach Berge Arzew Corporation)	2004	138 000	JV (SH 50%, 50 % BW Gas)
		<b>Total</b>	<b>776 600</b>	

## LNG FLEET



Vessel : **Tessala**

Owner or Shipowner: Hyproc SC

Date of Construction : 2016

Capacity (M<sup>3</sup>) : 171 800



Vessel : **Ougarta**

Owner or Shipowner: Hyproc SC

Owner or Shipowner: 2017

Capacity (M<sup>3</sup>) : 171 800



Vessel : **Lalla Fatma NSoumer**

Owner or Shipowner: ANGTC

Date of Construction : 2004

Capacity (M<sup>3</sup>) : 145 000



Vessel : **Berge Arzew**

Owner: SBAC

Owner or Shipowner: 2004

Capacity (M<sup>3</sup>) : 138 000



Vessel : **Cheikh El Mokrani**

Owner or Shipowner: MLTC

Date of Construction : 2007

Capacity (M<sup>3</sup>) : 75 000



Vessel : **Cheikh Bouamama**

Owner or Shipowner: SLTC

Date of Construction : 2008

Capacity (M<sup>3</sup>) : 75 000



## FLEET « LPG »

### 08 Navires Gpliers

Vessel	Owner or Shipowner	Construction Date	Capacity (TM)	Shareholding
<b>Djanet</b>	SPC (Sonatrach Petroleum Corporation)	2000	47 000	SPC 100 %
<b>Alrar</b>	SPC (Sonatrach Petroleum Corporation)	2004	32 000	SPC 100 %
<b>Rhourd Enouss</b>	SPC (Sonatrach Petroleum Corporation)	2004	32 000	SPC 100 %
<b>Hassi Messaoud 2</b>	SPC (Sonatrach Petroleum Corporation)	2005	32 000	SPC 100 %
<b>Berga 2</b>	Hyproc	2010	20 000	Hyproc 100%
<b>Rhourd El Fares</b>	Hyproc	2010	20 000	Hyproc 100%
<b>Rhourd El Hamra</b>	Hyproc	2008	12 000	Hyproc 100%
<b>Rhourd El Adra</b>	Hyproc	2007	12 000	Hyproc 100%
		<b>Total</b>	<b>207 000</b>	

## FLEET « LPG »



Name : **Djanet**

Owner or Shipowner: SPC BVI  
Date of Construction : 2000  
Capacity (TM): 47 000

Name : **Alrar**

Owner or Shipowner: SPC BVI  
Date of Construction : 2004  
Capacity (TM): 32 000

Name : **Rhourd Enouss**

Owner or Shipowner: SPC BVI  
Date of Construction : 2004  
Capacity (TM): 32 000

Name : **Hassi Messaoud 2**

Owner or Shipowner: SPC BVI  
Date of Construction : 2005  
Capacity (TM): 32 000

Name : **Berga 2**

Owner or Shipowner: Hyproc SC  
Date of Construction : 2010  
Capacity (TM): 20 000

Name : **Rhourd El Fares**

Owner or Shipowner: Hyproc SC  
Date of Construction : 2010  
Capacity (TM): 20 000

Name : **Rhourd El Adra**

Owner or Shipowner: Hyproc SC  
Date of Construction : 2007  
Capacity (TM): 12 000

Name : **Rhourd El Hamra**

Owner or Shipowner: Hyproc SC  
Date of Construction : 2008  
Capacity (TM): 12 000

## LIQUID HYDROCARBON FLEET

### 01 Petroleum

Vessel	Owner or Shipowner	Construction Date	Capacity (TM )	Shareholding
Mesdar	SPC (Sonatrach Petroleum Corporation)	2007	270 000	SPC 100 %

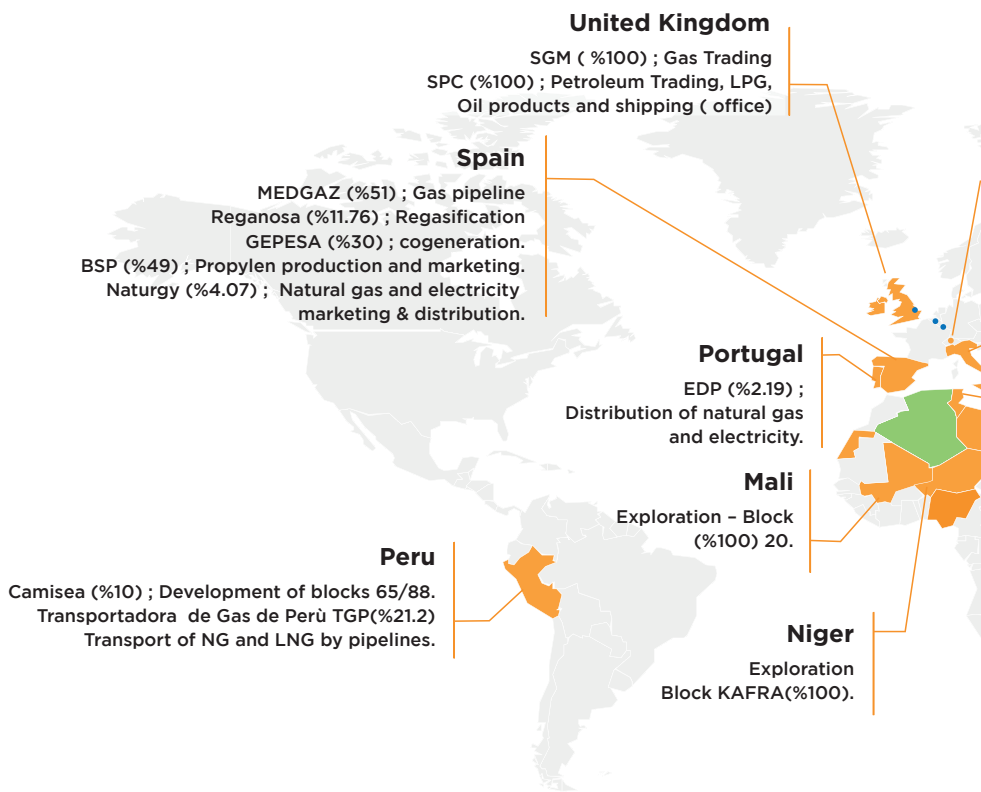


Name : **MESDAR**

Owner or Shipowner SPC BVI

Date of Construction : 2007

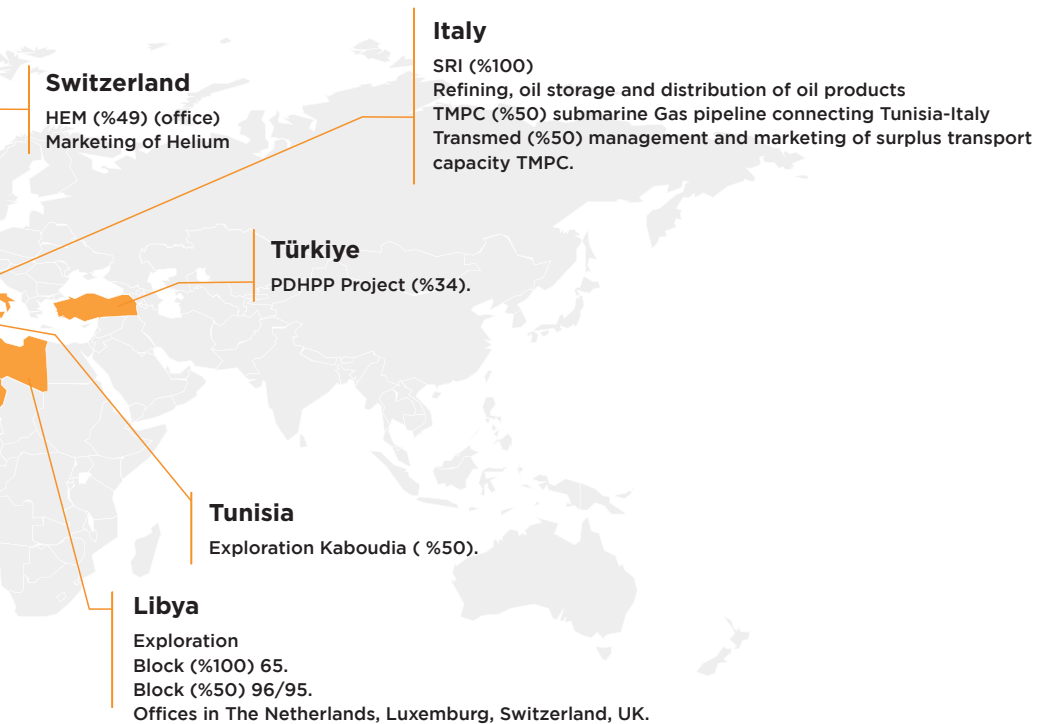
Capacity (TM): 270 000



• Offices: Netherlands, Luxembourg, Switzerland, UK



## GLOBAL PRESENCE



## **SONATRACH** actively engaged to reduce carbon footprint



**A commitment to reduce the impact of hydrocarbon activities on climate**



### **Reduction of carbon footprint**

2030 : lower than 1% of flaring and 0% of routine flaring



### **Reduction of fugitive methane emissions**

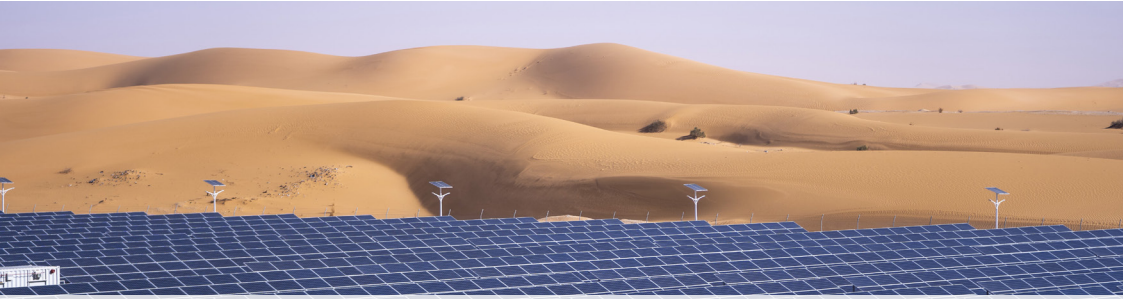
Monitoring of fugitive leaks and reduction of venting



### **Compensation program**

Ambition (2022-2030)  
450 million trees.

**SONATRACH, resolutely embarked in the energy transition that it places at the core of its development program**



**SONATRACH energy transition is centred around 3 axes :**

- Improvement of Energy efficiency.
- Renewable Energies.
- Hydrogen.



### **Improvement of energy efficiency**

SONATRACH, is committed to promoting energy efficiency as a core business principle.

### **Targets**



- Control self energy consumption.
- Reduce the production cost per barrel oil or per thermal of gas.
- Reduce environmental footprint.

## Standards



- Compliance with energy audits.
- Conformity with standards ISO 50001, in order to obtain certification in energy efficiency



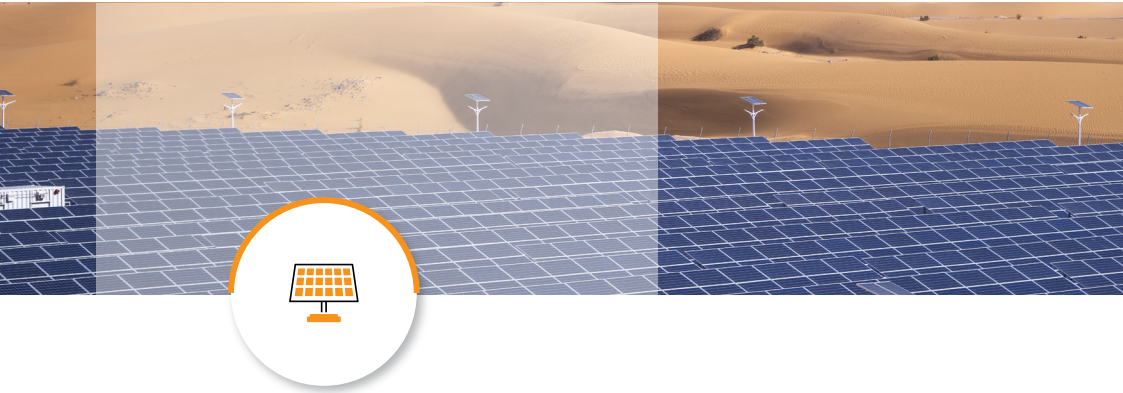
## Digitalization

- Digitalization which primary goal is optimizing processes for the improvement of self-consumption of the industrial units.
- GP1Z has been equipped with an Advanced Control system, based on the latest process optimization technologies.

## Key achievements

- Launch of climate research projects in partnership with Algerian universities.
- launch of project to estimate flared gas volumes by satellite.
- Feasibility study for converting flared gas from LNG complexes into fuel gas.





## Renewable Energies

SONATRACH has been engaged in a solarization program for its industrial facilities and living quarters.

- Installation in 2011 of the first concentrated solar powerplant (CSP) in Algeria.
- Construction in 2019 of a solar photovoltaic station at the deposit of Bir Rebaa North with a capacity of 10 MW.
- Construction of a “SOLAR LAB” at the Bir Rebaà North field to conduct research and development programs in the PV solar energy field.
- Preparation of several solarization projects at various sites: Menzel Ledjmet Est, Tin Foyé Tabankort , Gassi el Agreb.



## Hydrogen

Algeria owns a large potential of green hydrogen production

- The government has adopted a national strategy for the development of hydrogen with ambitious targets of production and exports to Europe centred on **2 phases** :

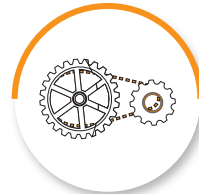


### Pilot projects phase



### Deployment phase

- SONATRACH owns **competitive advantages** with ammonia/urea production units and corridors to transport natural gas connected to Europe that will allow Algeria to play a major role in this field.



### Competitive Advantages



## Partnership and cooperation

- Many countries, including Germany, The Netherlands, Italy and Austria have already expressed their interest to get supplies of green hydrogen from Algeria and **develop this new energy niche in partnership.**
- Cooperation between Algeria Germany which aims to control the whole value chain of hydrogen, from production, processing, transport and marketing.
- Initiate larger-scale projects with the prospect of joining the H<sub>2</sub> South Corridor which aims to transport over 4 million T of hydrogen to Italy , Austria and Germany.







سوناتراک



sonatrach

### Headquarter

Djenane El Malik, Hydra, Alger, Algérie

Tél : +213 23 48 30 30

[www.sonatrach.dz](http://www.sonatrach.dz)

